

Is He Worthy?

with
O Come, All Ye Faithful

Words and Music by
ANDREW PETERSON
and BEN SHIVE
Arr. by Cliff Duren

* **1** **10** Worshipful ♩ = ca. 73

Chords: G, G⁴, G, G⁴, G

3 Em

Chord: Em

5 C²

Chord: C²

7 G G⁴ G G⁴ G

Chords: G, G⁴, G, G⁴, G

*CD POINTS: Split-channel, CD: 1-9; Stereo Trax, CD: 10-18; Vocal Demo, CD: 19

Copyright © 2018 Junkbox Music (ASCAP) Vamos Publishing (ASCAP)
Capitol CMG Genesis (ASCAP) (adm. at CapitolCMGPublishing.com) /
Jakedog Music (ASCAP) (admin. by Music Services). All rights reserved. Used by permission.



PLEASE NOTE: The copying of this music is prohibited by law and is not covered by CCLI or OneLicense.net.

*“O Come, All Ye Faithful”

CHOIR *unis.*

9

mp

Yea, Lord, we greet Thee,

mp

G D

11

born this hap - py morn - ing. Je - sus, to

G B C² G D Em

14

Thee be all glo - ry giv'n:

D F# G² D A A sus A D sus D

Word of the Fa - ther, now in flesh ap -

pear - ing. O come, let us a -

dore Him; O come, let us a -

For Preview Only

24

dore Him; O come, let us a - dore Him—

G D D C² D C²

27

Christ, the Lord! O come, let us a -

G D G B G C²

30

dore Him— Christ, the

D C² G D

32 3 12

MALE SOLO

mp

Do you

Lord!

C C⁴₂ C C⁴₂ C

For Preview Only

34

feel the world... is bro - ken? Do you

mp

We do.

mp

C C⁴₂ C C⁴₂ C

36

feel the shad - ows deep - en? But do you

We do.

A m

For Preview Only

38

know that all the dark won't stop the light from get-ting thro'?_

We

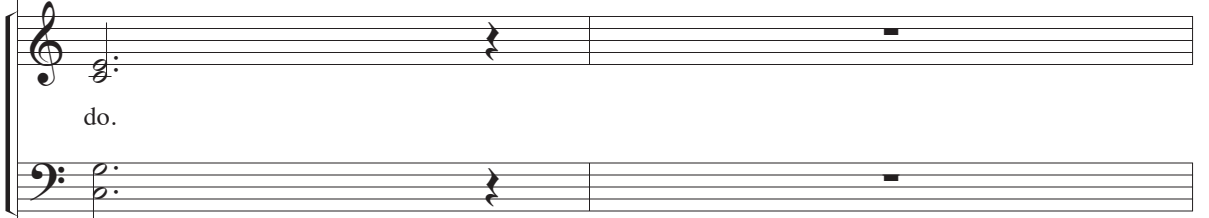
F2

For Preview Only

40

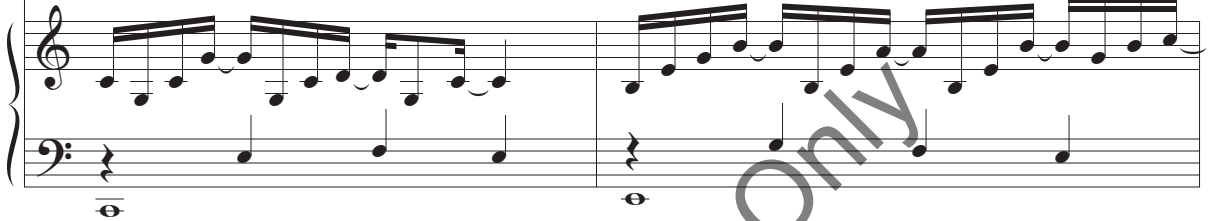


Do you wish that you_ could see_ it all_ made_



do.

C C⁴ C Em



42

4 13

(SOLO joins Choir)



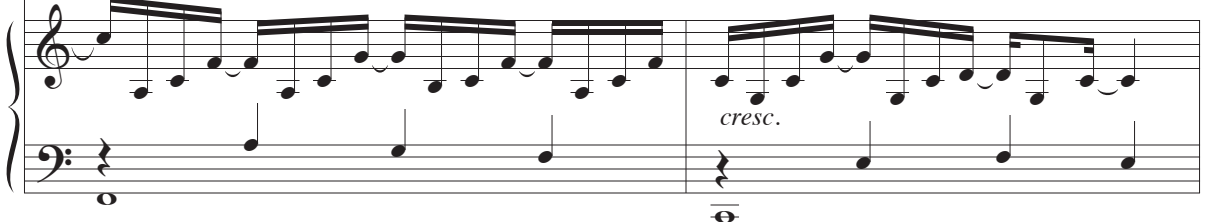
new?

We do.



We do.

F² C C⁴ C



cresc.

44

mf

Is an - y - one wor - thy? Is

mf

C⁴ C F² F

46

an - y - one whole? Is an - y - one a - ble to break the seal — and o -

G² G Am⁷ G

48

pen the scroll? The Li - on of Ju - dah Who

F² C² F² F

50

con- quered the grave! He is Da- vid's root and the Lamb Who died to ran -

G² G Am⁷ G

52

- som the slave. Is He wor - thy? Is He

F² Am G

mp

54

wor - thy of all bless - ing and hon - or and

C E F Am G

56

glo - ry? Is He wor - thy of this? He

C
E F A_m G F²

59

5 14

MALE SOLO

mf

Does the

is.

C C⁴ C A_m F²

61

Fa - ther tru - ly love_ us? Does the

mf He does.

C2

mf

FOR Preview Only

63

Spir - it move_ a - mong_ us? And does

mf He does.

A m7

FOR Preview Only

65

Je - sus, our — Mes - si - ah, hold for - ev - er those — He loves? —

He

F2

67

cresc.

Does our God in - tend — to dwell — a - gain — with us?

does.

C2

Em7

cresc.

(SOLO joins Choir)

f He does!

f He does. Is

f He does. Is

F2 C C E

71

an - y - one wor - thy? Is an - y - one whole? Is

F2 F G2 G

73

an - y - one a - ble to break the seal — and o - pen the scroll? The

Am⁷ G F² C
E

75

Li - on of Ju - dah Who con - quered the grave! He is

F² F G² G

77

Da - vid's root — and the Lamb Who died — to ran - som the slave. From ev - 'ry

Am⁷ G F² C
E

V V V V

peo-ple and tribe, ev-'ry na-tion and tongue, He has

F² A F A G² B G B

made us a king-dom and priests to God— to reign with the Son. Is He

C C E F² F G

wor - thy? Is He wor - thy of all

A m G C E F

85

bless - ing and hon - or and glo - ry? Is He
 sub. mp

Am G C E F

87

wor - thy? Is He wor - thy? Is He

Am G C E F

sub. mp

89

wor - thy of this? He

Am G F2

mf

SOLO *may ad lib*

is. For He a - lone is

C C sus C (no3)

f sfz f

wor - thy! For He a - lone is wor - thy! For

C (no3) B Am7 C G G

He a - lone is wor - thy! Christ, the

F2 G F2 C G G

101

ff

Lord! We'll give Him all the glo - ry! We'll

ff

C C^{sus} C D^b(no3) D^b(no3)
C

104

give Him all the glo - ry! We'll give Him all the

B^bm7 D^b/
A^b A^b G^b2

107

glo - ry! Christ, the Lord! Is He

A^b G^b2 D^b/
A^b A^b D^b D^b/
F G^bA^b

9 18

110

wor - thy? Is He wor - thy of all

B^bm A^b D^b/_F G^b

112

3
bless - ing and hon - or and glo - ry?

B^bm A^b D^b/_F G^b G^b^{#4}/₂

sfz cresc.

114

rit.

He is!

G^b2 A^b_{sus} G^b A^b7_{sus} D^b S^{va}

rit. *ff* S^{ub}